

THE APOSTOLIC FAITH MISSION

of South Africa

NOB

2022

EMPOWERMENT

Ashley Theron

Acting CEO - AFM Welfare





AFM Welfare's Spiritual Theme for 2022

“He has told you, O man, what is good; and what does the Lord require of you but to do justice, and to love kindness, and to walk humbly with your God?” – Micah 6:8

Micah 6:8 connects our faith with our actions, our care for those in need with our walk with God. It simply describes what God wants from us in return:

- ❖ to do justice,
- ❖ to love mercy, and
- ❖ to walk humbly with God.



AFM Welfare





AFM Welfare's Spiritual Theme for 2022

God tells us to “do justice.”

We have often defined justice by placing it primarily in a judicial realm.

Our definition of justice as Christians, should be “to create a world where all people have equal opportunity to fully develop the gifts that God has placed within them.”



AFM Welfare





AFM Welfare's Spiritual Theme for 2022

God desires for us to “love mercy,” or, in some translations, kindness referencing to:

- ❖ God’s loving kindness to us and
- ❖ God wanting us to be drawn to mercy by instructing us to have compassion for those in need.

It’s hearing God say once again, “As one of my people, I hope you love mercy—for that is what you have received.”



AFM Welfare





AFM Welfare's Spiritual Theme for 2022

To “walk humbly with God” is the basis for loving mercy and doing justice. Because of what God has done, we fully invest in healing the world around us through mercy and living a just life.

The adverb “humbly” moves us away from arrogance and the egocentric need to always be better than others, to the simple acceptance of the gifts that God has placed within us. The hymn “Trust and Obey” might come to mind.



AFM Welfare





An overview of the present activities of the AFM Welfare – **Your Welfare Department**



We render relevant and accessible services to vulnerable persons and families
in a changing South Africa



BACKGROUND



The EWC AFM is the Welfare Department of The AFM of SA. It was established and Registered as a National Welfare Council in 1938 and later as an NPO.

Our MISSION:

To render relevant and accessible services to the vulnerable persons and families in a changing South Africa.

There can be no keener revelation of a society's soul than the way it treats its children

– *Nelson Mandela*



AFM Welfare





BACKGROUND

Understanding South Africa's challenges:

- ❖ Poverty, high unemployment & inequality
- ❖ Crime
- ❖ Family breakdown
- ❖ Violence against vulnerable persons especially women, children, older persons and persons with disabilities
- ❖ Substance abuse including drug addiction
- ❖ AIDS

South Africa is the missional context in which the church demonstrates a caring spirit; committing to actions that better people's lives.



AFM Welfare





BACKGROUND

Governance: Executive Welfare Board

Chairperson: Pastor Barend Petersen (Western Cape)

Vice-Chairperson: Pastor Jean Symons (Gauteng)

Secretary: Pastor Trevor Herbert (Western Cape)

Treasurer: Pastor Rudi Coertzen (Gauteng)

Members:

Advocate Molly Malete (Gauteng)

Pastor Bongani Mashobane (Free State)

Pastor Lazarus Chauke (Lowveld)

Pastor Ezrom Mbonambi (KZN)



AFM Welfare





Sources of Income:

- ❖ Government Funding
- ❖ Subsidies
- ❖ Foster Care Grants
- ❖ Fundraising Activities – donations in cash and kind; Corporate and Individual donors.
- ❖ Churches – AFM and its Assemblies/Members; Other Churches.
- ❖ Fees
- ❖ Rental and Sales



AFM Welfare





The work of AFM Welfare:

The scope & practice of the AFM Welfare was:

The establishment and management of Institutions for children & older persons.

It now moves to include:

Community Development projects with and through AFM Assemblies.



AFM Welfare





A Broader Focus for AFM Welfare:

Continue with established Child & Youth Care Centres, Foster Homes and Retirement Villages.

Strengthening and expanding of our Community Development Programme, uManelisi. **Working more closely with the church.**

An updated Welfare identity.



AFM Welfare



BACKGROUND: CHILDREN & FAMILIES

Children between the ages of 0-18 years and can be removed from their parents' care due to:

- ❖ Physical abuse,
- ❖ Sexual abuse,
- ❖ Neglect, or
- ❖ Abandonment

Our uMephi Programme aims to improve the quality of life for children and their families, regardless of race, religion or nationality.

Pastor, GB Member, are you aware of the AFM Children's Home, Foster Home or Old Age Home in your area?



AFM Welfare





The **uMephi** program includes:

- ❖ 35 Child & Youth Care Centres
- ❖ 14 Foster Homes

Providing services to 450 children (from all races) in need of care and protection across 8 provinces of South Africa.



AFM Welfare





Residential Care Facilities for Frail Older Persons: Touwsriver, Sarepta, Kuilsriver.

Care and protection is provided to 266 individuals that come from challenging and disadvantaged communities.

They receive physical care, including medical care as well as psychological care after admission.



AFM Welfare





BACKGROUND: OLDER PERSONS

Retirement Villages: Centurion, PE, Bloemfontein, CT and Pretoria.

Retirement Villages remains a popular choice for +- 566 persons over the age of 50.

All units in the 6 Retirement Villages are always being utilized to the maximum.

One of our facilities offers 3 types of services: (i) a Frail Care Centre, (ii) Assisted Living and (iii) a Retirement Village.



AFM Welfare





BACKGROUND: COMMUNITY DEVELOPMENT

uManelisi works with and through local assemblies to render services and implement developmental actions that will bring about changes in communities.

Impact achieved through uManelisi:

- ❖ 4,207 beneficiaries of Home-Based Care
- ❖ 504 children cared for in the community
- ❖ 420 older persons cared for in the community
- ❖ 1,272 beneficiaries of Disability Programs
- ❖ 1,592 children benefiting from Early Childhood Development Centres
- ❖ 1,233 beneficiaries of Gender-based Violence Programmes

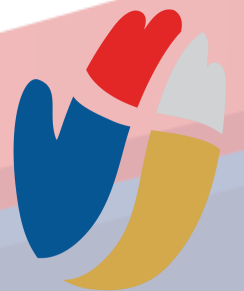


AFM Welfare





Operationalising the One AFM Game Plan Driver: Community Involvement



KEY CHALLENGES FACED BY FAMILIES AND COMMUNITIES



- ❖ Poverty, high unemployment & inequality
- ❖ Crime
- ❖ Family breakdown
- ❖ Violence against vulnerable persons especially women, children, older persons and persons with disabilities
- ❖ Substance abuse including drug addiction
- ❖ AIDS

Making a bigger impact – working with and through assemblies.



AFM Welfare



MISSIONAL STRATEGY





Game Plan Implementation: **MISSIONAL STRATEGY**

 <p>Discipleship Matthew 28:19 1 Cor. 11:1 Gal. 4:19 Acts 1:8 2 Cor. 3:18 Gal. 5:22</p>	 <p>Empowerment Ephesians 4:11-12 Mt. 28:19 2Tim. 2:2</p>	 <p>Ecumenical Involvement (Co-operation with other Churches) John 17:20-21 Eph. 4:3 Luke 9:50 Rev. 5:9</p>	 <p>Community Involvement Isaiah 56:6-8 Math. 10:8 Math. 25:35 Luke 4:18 Luke 14:13-14 James 1:27</p>	 <p>Governance Acts 6:3 1 Tim. 3:5 Math. 2:14 Rom. 12:8 1 Cor. 12:28</p>
 <p>VALUES Integrity Accountability Relationships Excellence</p>				
 <p>MISSIONAL Matthew 28:19 Mark 16:15 John 20:21 Acts 1:8</p>				



AFM Welfare



COMMUNITY INVOLVEMENT



AFM Assemblies are called to get involved with the challenges of their local communities.

Although excited, some Assemblies are not sure where to begin and how to implement this driver.

AFM Welfare has the tools, programmes and information to support the AFM Assembly with implementing social development actions.

Giving meaning to the One AFM Game Plan Driver:
Community Involvement through the uManelisi
Community Development Programme



AFM Welfare





What is Community Involvement?

- ❖ Helping others meet their needs
- ❖ Reaching out to people in need
- ❖ Doing good to others
- ❖ Uplifting of people
- ❖ Making a difference in people's every day life
- ❖ Serving on various community structures including School and NPO Committees



AFM Welfare





Community Involvement entails:

- ❖ Work done by a person or group of people that benefits others.
- ❖ Volunteering your service - not expecting payment to perform community service.
- ❖ Helping many different groups of people: children, senior citizens, people with disabilities.
- ❖ Participating in community service because of the importance of helping others and improving their community.



AFM Welfare





Important questions to ask?

- ❖ Who you like to help?
- ❖ Is there a specific group of people or cause you are passionate about?
- ❖ Do you want a community service activity that is reoccurring or a one-time event?
- ❖ What kind of impact do you want to have?



AFM Welfare





What are the BENEFITS of Community Involvement?

- ❖ Gives you a way to help others.
- ❖ Makes a difference in the lives of others.
- ❖ Helps improve your community.
- ❖ Often results in personal growth.
- ❖ Gives you a way to gain new experiences and to live out your calling and passion.



AFM Welfare





A. Embrace an expansive concept of community

1. Learn to regard your community as an extension of your congregation. A church's mission field goes beyond its membership to include all the people God calls it to serve. Its about connecting to individuals who never set foot in your building.

2. Don't sit in your church building waiting for people to come. Be prepared to meet people where they are.



AFM Welfare





B. Prepare Spiritually

3. Acknowledge the synergy between the Great Commandment in Matthew 22 (love your neighbour as yourself) and the Great Commission in Matthew 28 (go and make disciples).

4. Remember that Jesus primarily engaged people through everyday encounters. He fed people, met their everyday needs, and enjoyed the fellowship of others.

5. Express love and compassion for your community in big and small ways. Avoid judgmentalism.



AFM Welfare





C. Get to know the community surrounding your church

6. Research - Do your research beforehand and see what others have done in the past and what has worked and what hasn't. Talk to local leaders and social workers/Community Worker.

7. Review demographic data from public, private, and denominational sources, but don't assume that statistics alone will tell the whole story.



AFM Welfare





D. Get to know the community surrounding your church

8. Get out in your neighbourhood. Walk the streets. Map the area, and record your observations. Note how the community is changing.

9. Assess community needs and assets. What are the needs of your context? Who are your neighbours, and how can you serve them?



AFM Welfare





E. Listen and Learn

10. Interview residents of the community. Sit in a park, diner, or coffee house. Simply ask, “What are your challenges, hopes, longings and dreams?” Ask what issues, suffering, injustices, or brokenness might you address.

11. Get to know the major government officials. They are people with tremendous influence. They need to know of your church’s commitment to the community.



AFM Welfare





F. Build authentic relationships

12. Strive for meaningful engagement with others.

13. Make sure you are reaching out to people for the right reasons. If your motive is simply to get them to come to church, people will see right through to it.

14. Collaborate with others who are also passionate about the community.

15. Don't reinvent the wheel if you can partner with someone else serving the community.



AFM Welfare





G. Turn your existing ministries around

16. Challenge each church group with an inside focus to find a way to become involved with the community outside the church. A choir might sing at a old age home, Youth group can organise a sport day at a children's home or trustees could sponsor a neighbourhood clean-up.

17. Build relationships with those taking part in existing programs that serve the community, such as literacy classes, food pantry or clothes bank users, day-care families, etc.



AFM Welfare





Community Development seeks the empowerment of the local communities, taken to mean both geographical communities, communities of interest or identity and communities organising around specific topics.



AFM Welfare





Working even closer with the AFM Church, other churches and structures to provide support on the implementation of social development strategies:

- ❖ Child Protection & Family Strengthening
- ❖ Care and Protection of Older Persons & Persons with Disabilities
- ❖ Socio-Health Services
- ❖ Socio-Education Services
- ❖ Socio-Economic Services



AFM Welfare





Examples of Projects

Services or Support to Vulnerable Children:

- ❖ Children's Groups, Shelters, Child & Youth Care Centres, Foster Homes and Drop-in Centres.

Family Support:

- ❖ Victim Empowerment Centres, Parenting Skills Training, Parents Support Groups or Marriage Enrichment Programmes.



AFM Welfare





Examples of Projects

Older Persons:

- ❖ Community and Home-based Care, Old Age Homes and Service Centres, Support to families.
- ❖ Older Person's Groups.

Persons with Disabilities:

- ❖ Community and Home-based Care.
- ❖ Support to families.
- ❖ Groups for Persons with Disabilities.



AFM Welfare





Examples of Projects

Persons affected or infected by AIDS:

- ❖ Prevention & Raising Awareness, Supporting patients through long-term Care Programmes.

Services related to Substance/Drug Abuse:

- ❖ Rehab or Day-treatment Centre, Support Groups, School Outreach Programmes.



AFM Welfare





Examples of Projects

Schools, Early Childhood Development (ECD), Literacy Programmes, After-school Centres.



AFM Welfare





Examples of Projects

Poverty Alleviation Services:

- ❖ Soup Kitchens, Social Relief, Food Parcels, Clothing Distribution, Small Scale Farming.

Job Creation or Employability Preparation:

- ❖ Upskilling, assisting with CV's or preparing for Job Interviews, Empowerment Programmes to address Inequality, Women Empowerment, Youth Empowerment.



AFM Welfare





1. Community Involvement Driver.
2. Provide technical support to address social challenges/needs identified by Region – A one-day Pastoral Empowerment, Regional Mini Welfare Conferences, Presentation at RLF meetings, Pastor's Toolkit – how to address Social Challenges & Training of trainers on for e.g. parenting skills.
3. Input, feedback and perceptions.



AFM Welfare



OPPORTUNITIES FOR THE AFM CHURCH TO SERVE AFM WELFARE



- ❖ Supporting AFM Welfare Institutions that are geographically located in your region.
- ❖ At least R1 per member per month campaign.
- ❖ AFM Welfare Weekend – special offering at Sunday Service (last weekend in November of every year).
- ❖ Advice needed on how some Emeriti Pastors can be mobilized to share information and encourage assemblies and individuals to support AFM Welfare.



AFM Welfare



CONCLUSION



Vulnerable people are precious -
Handle with prayer

Contact Details:

Ashley Theron

083 825 9699

ashleyt@afmwelfare.org.za



AFM Welfare

